

Climate Change and Species Extinction

Kate Huang - Research Essay Presentation

Greenhouse gas effect

Main causes of greenhouse gas emissions:

- Electricity generation
- Transportation

How greenhouse gases lead to global warming:

- Absorbed sunlight energy is reflected as infrared waves
- Greenhouse gases absorb the infrared waves → re-emit back to Earth → GLOBAL WARMING!!





Species have gone extinct because of global warming... (or you can say, humans)

The Bramble Cay melomys

- Live on a tiny island between Australia and New Guinea.

Why did they go extinct?

- Extreme weather killed them directly
- Habitat loss
- Food scarcity



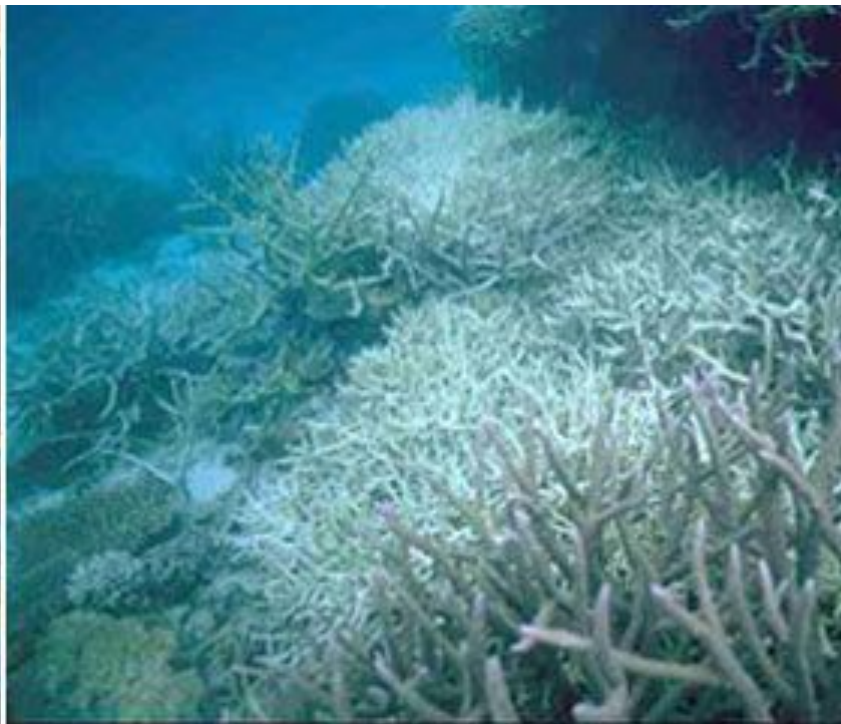
Coral Reefs

- Increase in ocean water temperatures → coral bleaching → destruction of coral ecosystem

How is that important?

- Coral reefs support marine biodiversity
- Tons of other marine animals WILL die







What are the solutions?

Carbon pricing

Companies need pay a price for each ton of carbon emissions they release → seek a way to reduce carbon emissions

Technology subsidies

Provide businesses a financial incentive in exchange for a particular economic activity such as using machines that have low emissions

Performance standards

Set a boundary or benchmark for power generation



If the situation gets worse, 30% of species will go extinct by 2050. Also, human health and the global economy will be affected.

If we don't act right now, we will be killing millions of animals and destroying our future